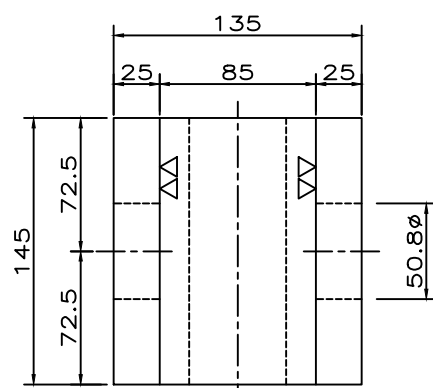
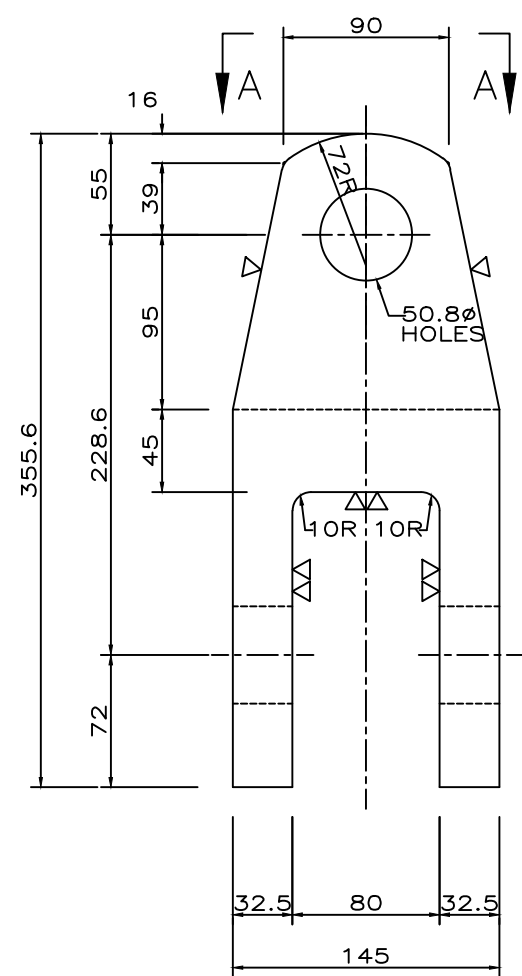
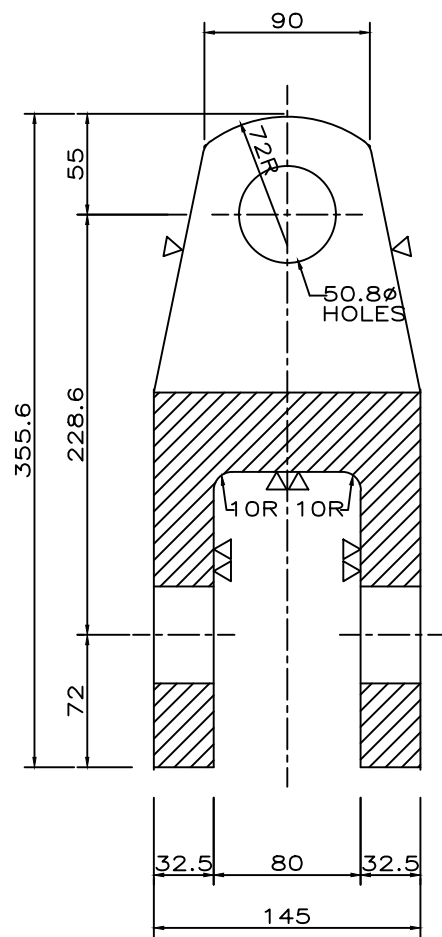
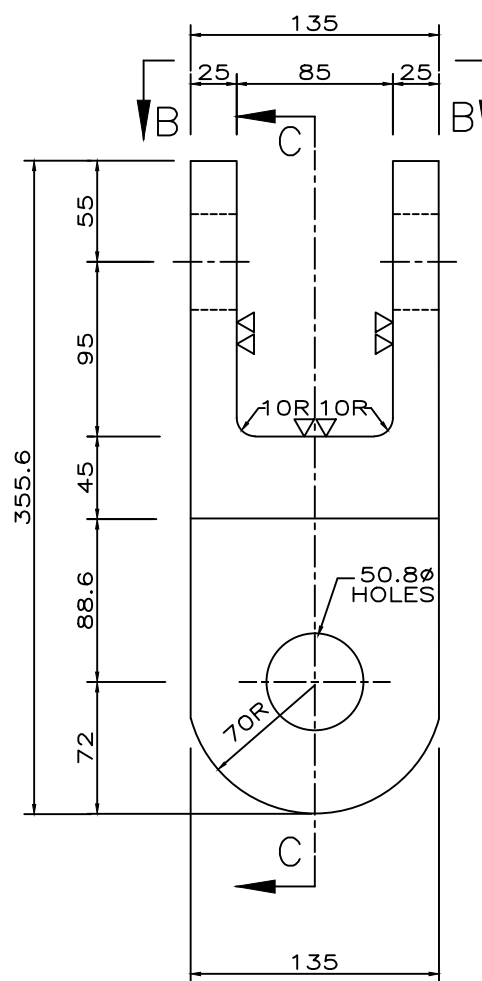


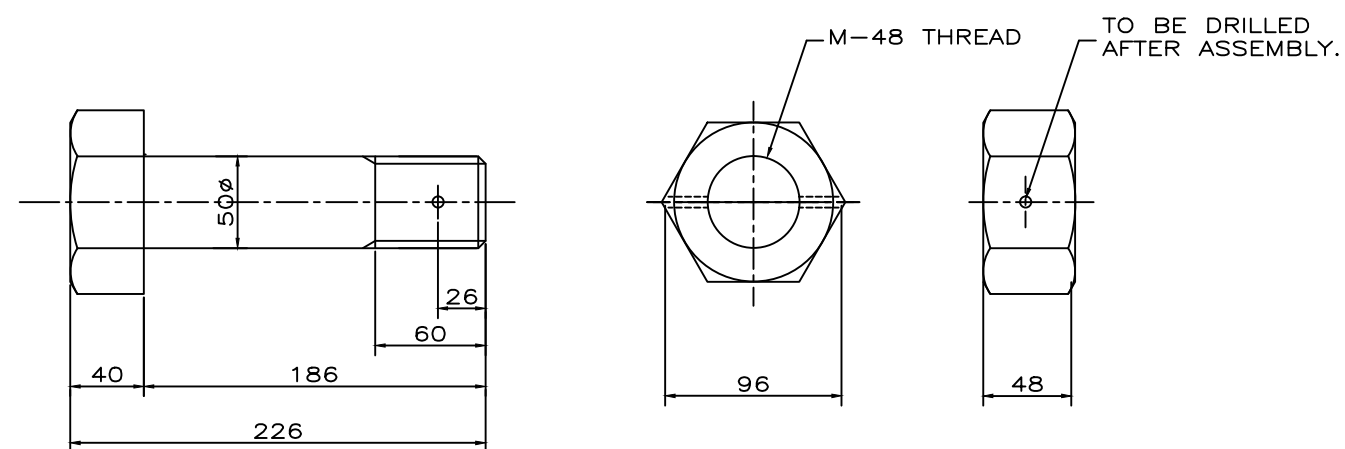
VIEW-"AA"



VIEW-"BB"

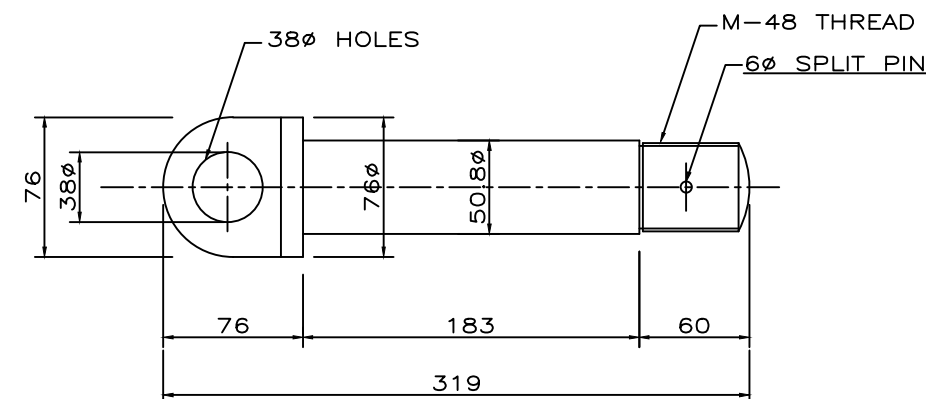
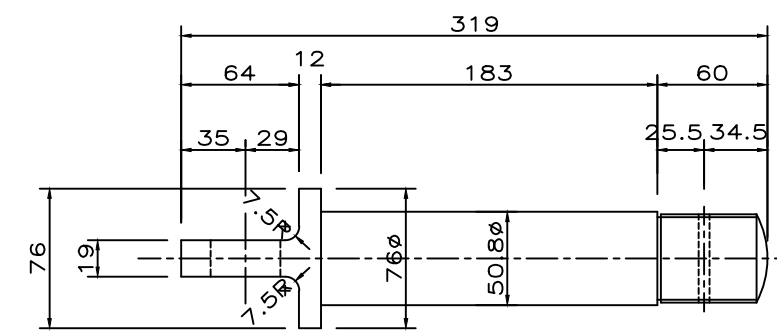
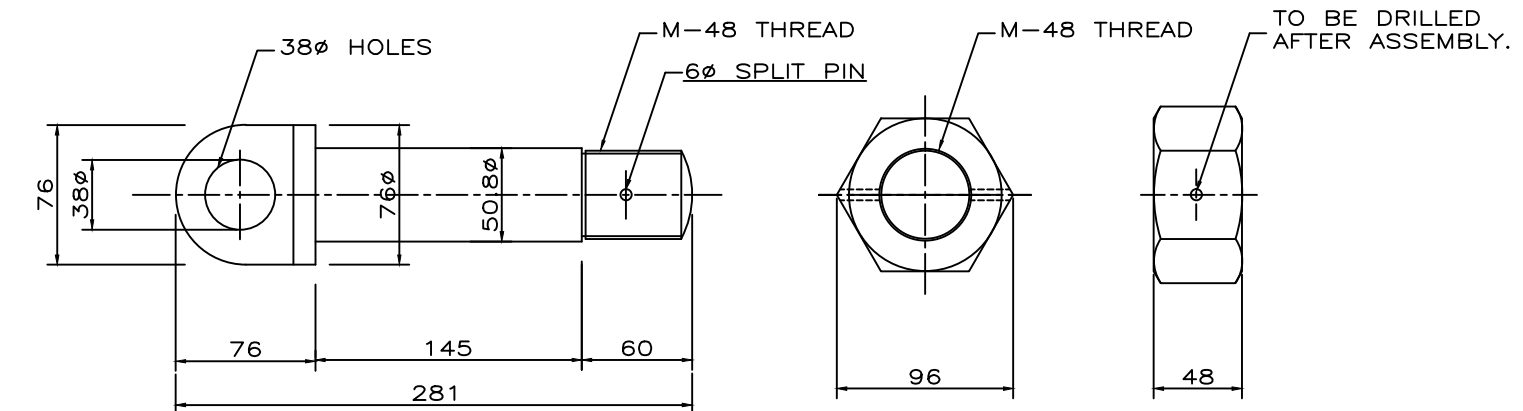
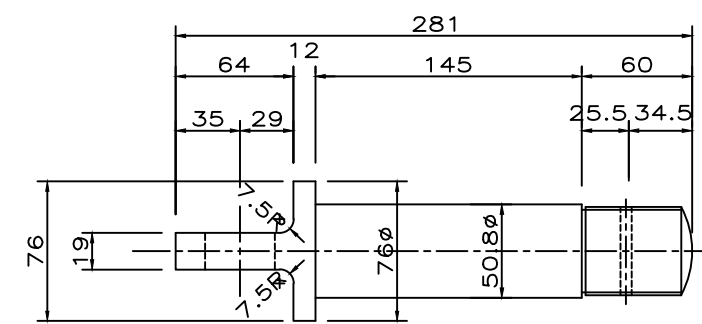
DETAILS CHASE BLOCK.  
(CAGE/SKIP)  
PART No.1

SECTION-"CC"

DETAILS OF BOLTS & NUTS.  
(CHASE BLOCK)

## MACHINING

▽ <sub>s</sub>	- SPOT FACE
▽	- ROUGH MACHINING
▽▽	- SMOOTH FINISHING
▽▽▽	- GRIND FINISHING

PART No.2  
DETAILS OF PIN.  
(CAGE)DETAILS OF PIN.  
(SKIP)

## BILL OF MATERIALS

4	HEX.HD.BOLT & NUT.M-48xL=186.	20Mn2 IS:1570	2	3.25	6.50	
3	PIN 76 Dia.xL=186.M-48 HEX.NUT	20Mn2 IS:1570	2	6.50	13.00	
2	PIN 76 Dia.xL=320.M-48 HEX.NUT	20Mn2 IS:1570	2	11.50	23.00	
1	CHASE BLOCK 356x145x135 Thk.	20Mn2 IS:1570	2	50.00	100.00	
Part No.	DESCRIPTION	MATL.	QTY	UNIT/Wt	TOTAL/Wt	REMARKS

NOTE: ALL PARTS TO BE ULTRA SONICALLY TESTED AS PER DGMS RULES.



COPY RIGHT RESERVED

URANIUM CORPORATION OF INDIA LTD.						MATERIAL :		AS MENTIONED ABOVE		WEIGHT IN Kgs. ~ 142.5	
TURAMDIH MINE											
SCALE :	SUBJECT :		TITLE								
N.T.S			<u>CHASE BLOCK FOR CAGE/SKIP SUSPENSION FOR M/s UCIL</u>								
	SUSPENSION		CAD FILE	NAME		SIGNATURE		DATE		SHEET No. :	
			SUS-CHASE	DRAWN	C.K.PANDA					DRAWING No.	
			CHECKED	R.K.MAHATO						MECL/TMD/8-3	
			APPROVED	P.RANJAN						REV.	
ALL DIMENSIONS ARE IN mm. IF IN DOUBT ASK.											

P.R. No.- 094:305/9236  
Dt.- 15.11.16